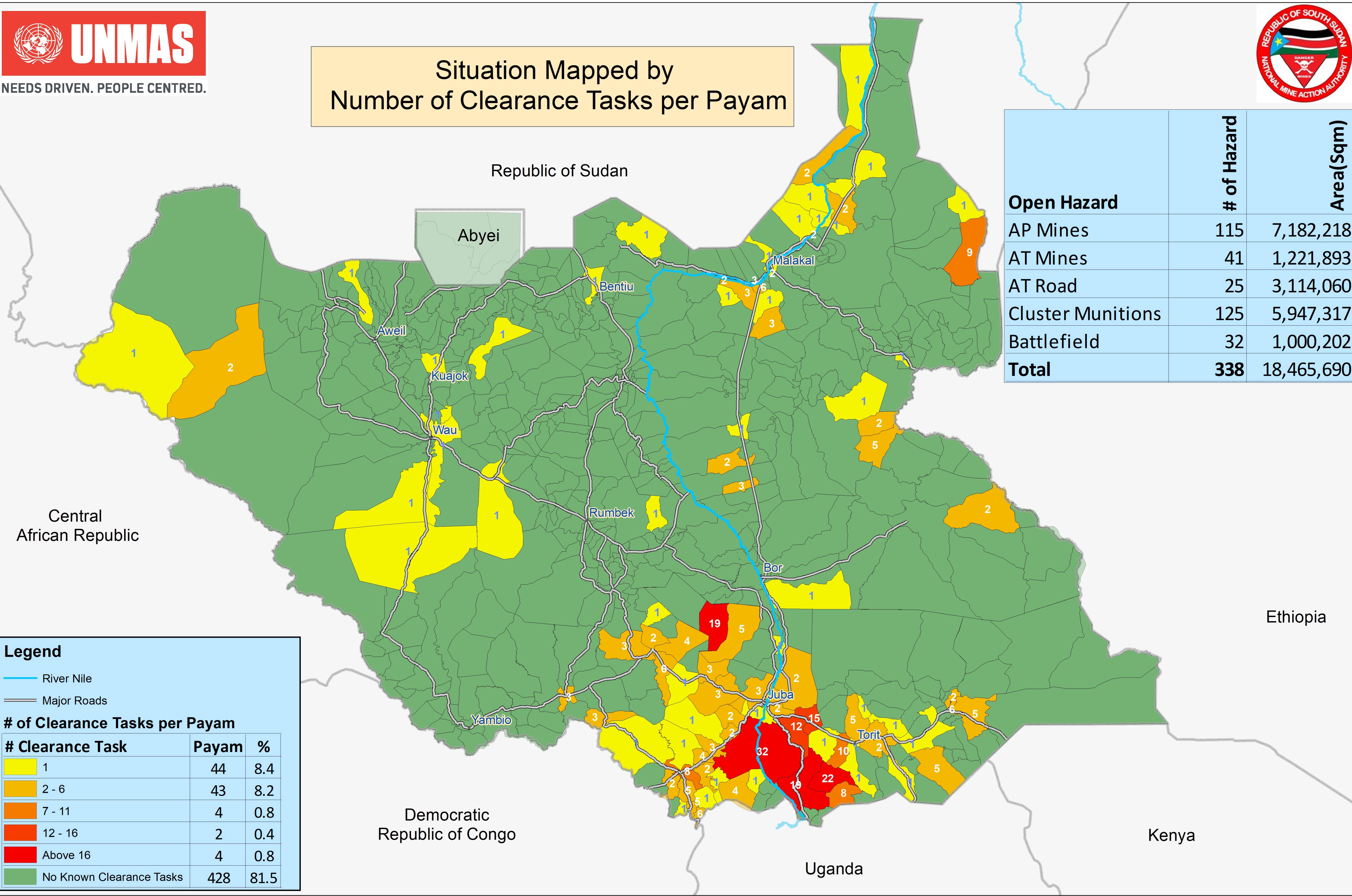


Remaining Hazardous Areas in South Sudan as of 30 April 2021



Situation Mapped by
Number of Clearance Tasks per Payam



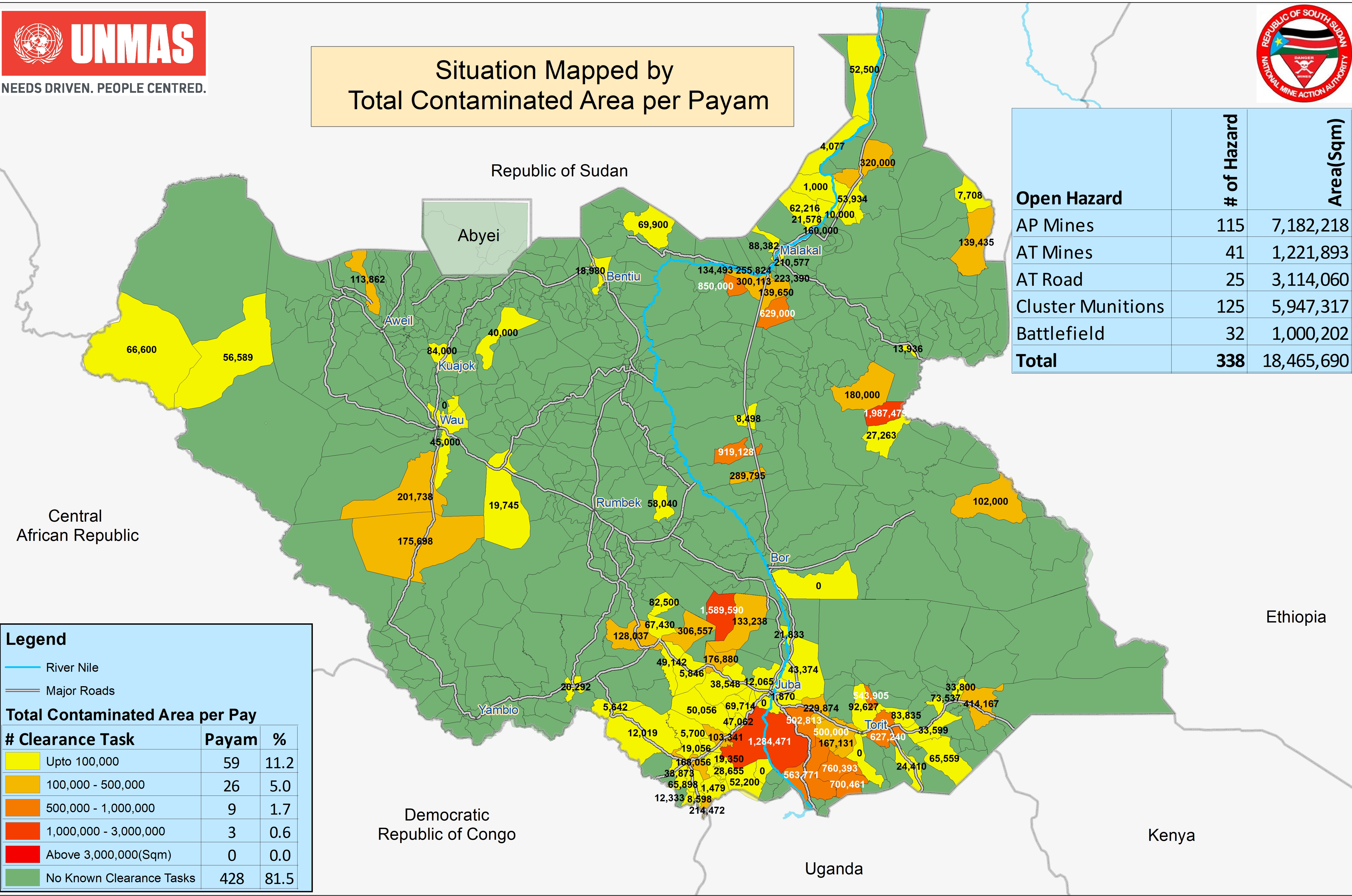
Open Hazard	# of Hazard	Area(Sqm)
AP Mines	115	7,182,218
AT Mines	41	1,221,893
AT Road	25	3,114,060
Cluster Munitions	125	5,947,317
Battlefield	32	1,000,202
Total	338	18,465,690

Legend		
— River Nile		
— Major Roads		
# of Clearance Tasks per Payam		
# Clearance Task	Payam	%
1	44	8.4
2 - 6	43	8.2
7 - 11	4	0.8
12 - 16	2	0.4
Above 16	4	0.8
No Known Clearance Tasks	428	81.5

Remaining Hazardous Areas in South Sudan as of 30 April 2021



Situation Mapped by
Total Contaminated Area per Payam



Open Hazard	# of Hazard	Area(Sqm)
AP Mines	115	7,182,218
AT Mines	41	1,221,893
AT Road	25	3,114,060
Cluster Munitions	125	5,947,317
Battlefield	32	1,000,202
Total	338	18,465,690

Legend		
River Nile		
Major Roads		
Total Contaminated Area per Pay		
# Clearance Task	Payam	%
Upto 100,000	59	11.2
100,000 - 500,000	26	5.0
500,000 - 1,000,000	9	1.7
1,000,000 - 3,000,000	3	0.6
Above 3,000,000(Sqm)	0	0.0
No Known Clearance Tasks	428	81.5